



# Same<>Same

[Program Overview & Features](#)

[Downloading Files](#)

[Uploading Files](#)

[File Menu](#)

[Running Same<>Same](#)

[Release History](#)

[Known Bugs And Limitations](#)

[About Developer](#)

[Registration Form](#)

[Copyright Notice And Disclaimers](#)



## Program Overview & Features

I created **Same<>Same** to make it easy for me to take files to and from my work and home computers. I invested time and money into buying programs to transfer files via a modem. While using this for a large amount of files works well, for just a megabyte or two of files, it takes up too much time and makes my home phone unusable. That's why I created **Same<>Same**. To save time! **Same<>Same** can also be used to distribute files within the work place also!

### Features:

---

- Configurable to use many different sizes of diskettes. Can even use 3 1/2 1.4MB (2.7MB) floppies compressed with Stacker.
- The **Same<>Same** feature makes directories on different computers identical.
- Gives an estimate of how many disks it will take to download a group of files.
- Displays the percentage of the download and upload completed, based on file size.
- Warns you if you are about to upload a file older than the one that may exist on the hard drive.
- Saves time by not uploading files that are the same date and time as the one on the hard disk. A feature that File Manager dose not have.
- Makes it simple to select files for downloading by keeping a list of the downloading specs used.
- Displays the estimated download and upload time, with estimate of time left.
- Can download all files, new files or files modified after a given date.



## Downloading Files To Disk

[Related Topics](#)

To Download files to a floppy disk:



To add file specs to download to the download box, click on the 'Add' button. This will bring up a dialog box that will allow you enter a spec. The blue colored list box contains the specs of recent downloads. Click on the spec and it will be automatically put into the spec box. Press 'OK' when finished.

To clear some of the specs from the blue box in the file dialog see: [/popup Purge,Spec List/ Purging](#)



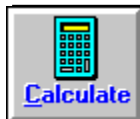
Click on this button to remove specs from the download box. The list box supports multiple selections.



Clicking on this button will add to the download box a group of specs saved with the 'Save List' button. Duplicates will automatically be removed.



To save a group of specs to a list file to use during another download session: highlight the specs you want to save and click on the 'Save List' button.



Click on this button to find out about how many disks and how long your download will take.

To download the files to disk, click on the 'Download' button. You will be prompted to insert a disk. **Same<>Same** will check to see if there are any files on the disk. If there are you will be given the opportunity to erase the disk. If you choose 'No', **Same<>Same** will still download to that disk. When you upload, **Same<>Same** will ignore the files not downloaded by **Same<>Same**. If the disk contains files previously downloaded with **Same<>Same**, the new files will be added to the [configuration file](#). If your download requires more than one disk, you will be prompted to insert more disks.



## Uploading Files From Disk

[Related Topics](#)

To upload files, insert a disk with files previously downloaded with **Same<>Same**.

**Same<>Same** will display the drive, directory and files specs for the first group of files. You can either upload those files to the same drive and directory or enter a new drive and directory. If you don't want to upload that group of files choose 'SKIP'. Choosing 'QUIT' aborts the uploading process for that disk.

If **Same<>Same** discovers that the file on the hard drive is newer than the file it's trying to upload it will display a message box telling you so. You can then choose to overwrite the file, skip uploading that file or skip uploading all files that are newer on the hard drive.

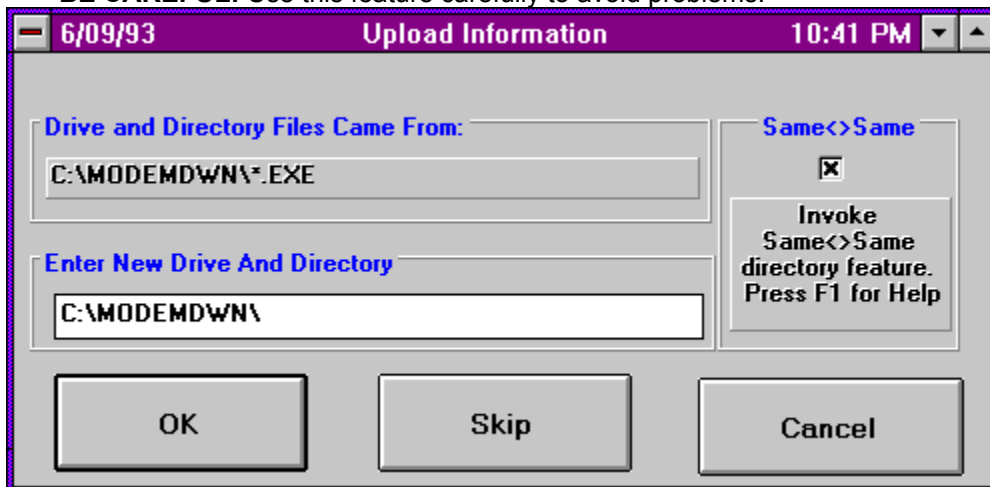
Repeat the above process for each **Same<>Same** disk.

**Same<>Same** will not upload files that might be on the disk that were not downloaded with **Same<>Same**.

### Same<>Same Feature

The **Same<>Same** feature allows you to make matching directories on different computers. Lets say you want to make your directory of fonts on two different computers identical. When you go to upload the new files, click the check box on the Upload dialog box and the **Same<>Same** feature will erase all files in the upload directory that match the file specs being uploaded.

**BE CAREFUL!** Use this feature carefully to avoid problems!





## File Menu

**Configure:**

**Drive/Size**

**Download/Upload Speed**

**Spec List/ Purging**

**Set Time/Date**

## Spec. List

This feature in the file dialog box keeps a list of the latest 'drive/directory/spec' s that you downloaded. Click on one of the specs and the drive/ directory and spec. boxes will automatically be changed.

### **Purging the Spec. List**

---

Your spec. list could get quite large. Under the 'File' menu, select 'Purge'. Then select 'Purge xx' where xx is amount of specs to keep.



## Configuration of Same<>Same

### Drive/Size

First choose which drive your floppies will be located in.

Choose the drive size you are using. This is very important! **Same<>Same** will only download files that will fit on your floppy. To use floppies compressed with Stacker, Stacker must be resident on your system!



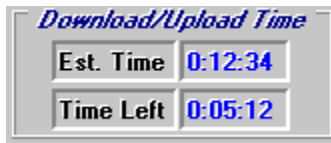
Choose which drives you would like to see the Drive Gauges to display the free space available. You can choose up to four drives. The fifth gauge is reserved for the floppy drive used for uploading and downloading.

### Download Configure

The default is to download all files. If you choose to download changed files only, this will download files with the archive attribute set 'on'. After the file is downloaded, **Same<>Same** will turn the archive attribute setting to 'off'. This feature can really cut your download time! If you choose to download files with a date on or after a specified date, **Same<>Same** will only download those files. This can also cut your download time!



## Download/Upload Speed



As shown in this example, **Same<>Same** will give you an estimate on how long it will take to download or upload files and the estimated time left. **Same<>Same** comes configured to give an average of this time. Since every computer will transfer files at a different speed, choosing 'Configure-DL/UL Speed' will permanently change the setting so that these times will be more accurate for your system. You can reconfigure this at any time.

This test will use the files 'COMMAND.COM' & 'AUTOEXEC.BAT' from your C: drive. I found using one medium size file and one small file will give a good estimate.





## Set Time/Date

File Help	
Configure	▶
Purge File List	▶
Set Time	
Set Date	
Exit	Ctrl+E

When uploading files, if your system date and time are wrong, you may get some false warnings from **Same<>Same** stating that the files on the hard drive are newer than the ones on the floppies.

If this happens and you know for sure that the files on the floppy are newer, choose 'Set Time' and 'Set Date' from the File Menu to change the time and date.



## Running Same<>Same

**Same<>Same** requires VBRUN300.DLL to run. This is a run time file required for all programs created with Visual Basic for Windows 3.0. You can find this file on most BBS systems and FTP sites as file VBRUN300.ZIP . VBRUN300.DLL must be located in your path. It's a good idea to either put it in your WINDOWS or WINDOWS\SYSTEM directory.

**Same<>Same** has been fully tested for use with Windows 3.1. It has not been tested with any version lower than that.

Since copying files takes up most of the CPU time, DO NOT minimize **Same<>Same** and run other programs in the background! If you do this, your other programs will be painfully slow.

# Release History

## Version 1.1 Released 11/1/93

Added button to main form to change what type of files to download (all,new or on/after date)  
Fixed known bugs.  
Added more error checking.

## Version 1.1 Released 10/4/93

Fixed known bugs.  
Added more error checking.

## Version 1.0 Shareware Released: 9/1/93

Added the speed configuration.  
Added the time and date on the main screen.  
Added the set time and date feature  
Changed the look and feel of the main screen.  
Added Disk Gauges to show available disk space  
Added custom download configuration lists.  
Add the feature to download new files or files on or after a given date.

## Version .2B

Added Windows Help file.  
Added the spec. list and the ability to purge the list.  
Changed the download and upload status display to indicate the amount completed by file size instead of file number count.  
Now give a estimated download & upload time and the amount of time left.  
Fixed a bug when canceling from the file dialog box.  
Added the **Same<>Same** feature!



## Known Bugs And Limitations

There seems to be a problem when downloading a large amount of files and erasing a disk during the download. This causes an error 3006 on my computer. I will be working on a solution. Please let me know if you get this error. Let me know what Same<->Same was doing at the time.



## Developer Information



### **Same<>Same**

was created by:  
**David McCarter**  
**DPM Computer Solutions**

How to reach me:

Write me at:

8430-D Summerdale Road, San Diego CA 92126-5415.

**InterNet-MCCART@VAXD.GAT.COM.**

**CompuServe Users**-Contact me using the address: INTERNET:MCCART@VAXD.GAT.COM

### **The Future Of Same<>Same:**

The future of **Same<>Same** rests on your shoulders... the user. Since I developed **Same<>Same** for my own use, unless I hear from you (the user), the only changes I will make will be for my benefit. Some ideas that I have include: Downloading newer files only. Making two directories on two or more computers identical. For example, if you want two computers to have the same font files, **Same<>Same** could do that.

**Same<>Same** was written with the following programs:

**Visual Basic 3.0 Pro Version**

**DSKSPC.DLL**:Developed by-James Shields,P.O. Box 31926,Seattle, WA 98103-1926 ,CompuServe ID: 71231,2066

The **Same<>Same** Windows Help File was written with the following Shareware programs:

**Quick & Dirty Help**: Phil Allen, 1185 Lowell Dr. Apt #5,Oconomowoc, Wi 53066

**Programmer's File Editor** Alan Phillips

Thanks to the following people for without them this project would have been much harder or might have never gotten to this stage:

**Ted Torres**: Always straight to the point. (Helped me learn/fix code)

**Phil Allen**: Developer of Quick & Dirty Help, without his program, I don't think I would have ever written this Help File.)

### Registration Form



## Copyright Notice And Disclaimers

**Same<>Same** is not been public domain software, nor is it free software.

Non-licensed users are granted a limited license to use **Same<>Same** on a 30-day trial basis for the purpose of determining whether **Same<>Same** is suitable for their needs. The use of **Same<>Same**, except for the initial 30-day trial, requires registration. The use of unlicensed copies of **Same<>Same**, outside of the initial 30-day trial, by any person, business, corporation, government agency or any other entity is strictly prohibited.

A single user license permits a user to use **Same<>Same** only on a single computer. Licensed users may use the program on different computers, but may not use the program on more than one computer at the same time.

No one may modify or patch the **Same<>Same** executable files in any way, including but not limited to decompiling, disassembling, or otherwise reverse engineering the program.

A limited license is granted to copy and distribute **Same<>Same** only for the trial use of others, subject to the above limitations, and also the following:

1. **Same<>Same** must be copied in unmodified form, complete with the file containing this license information.
2. The full machine-readable **Same<>Same** documentation must be included with each copy.
3. **Same<>Same** may not be distributed in conjunction with any other product without a specific license to do so from David P. McCarter.
4. No fee, charge, or other compensation may be requested or accepted, except as authorized below:
  - a. Operators of electronic bulletin board systems (Sysops) may make **Same<>Same** available for downloading only as long as the above conditions are met. An overall or time-dependent charge for the use of the bulletin board system is permitted as long as there is not a specific charge for the download of **Same<>Same**.
  - b. Vendors of user-supported or shareware software approved by the ASP may distribute **Same<>Same**, subject to the above conditions, without specific permission. Non-approved vendors may distribute **Same<>Same** only after obtaining written permission from David P. McCarter. Such permission is usually granted. Please write for details (enclose your catalog). Vendors may charge a disk duplication and handling fee, which, when prorated to the **Same<>Same** product, may not exceed eight dollars.
  - c. Nonprofit user groups may distribute copies of the **Same<>Same** diskette to their members, subject to the above conditions, without specific permission. Nonprofit groups may collect a disk duplication fee (not to exceed five dollars).

**Same<>Same** Copyright 1993 David P. McCarter ALL rights reserved

### LIMITED WARRANTY

---

David P. McCarter guarantees your satisfaction with this product for a period of 90 days from the date of original purchase. If you are unsatisfied with **Same<>Same** within that time period, you must inform David P. McCarter (address below) in writing within 7 days of the expiration of the warranty.

David P. McCarter warrants that all disks (if provided) are free from defects in material and workmanship, assuming normal use, for a period of 90 days from the date of purchase. David P. McCarter warrants that the program will perform in substantial compliance with the documentation

supplied with the software product. If a significant defect in the product is found, the Purchaser may return the product for a refund. In no event will such a refund exceed the purchase price of the product.

Except as provided above, David P. McCarter disclaims all warranties, either express or implied, including, but not limited to implied warranties of merchantability and fitness for a particular purpose, with respect to the product. Should the program prove defective, the purchaser assumes the risk of paying the entire cost of all necessary servicing, repair, or correction and any incidental or consequential damages.

In no event will David P. McCarter be liable for any damages whatsoever (including without limitation damages for loss of business profits, business interruption, loss of business information and the like) arising out of the use or the inability to use this product even if David P. McCarter has been advised of the possibility of such damages.

Use of this product for any period of time constitutes your acceptance of this agreement and subjects you to its contents.

#### US. GOVERNMENT RESTRICTED RIGHTS

Use, duplication, or disclosure by the Government is subject to restrictions as set forth in subdivision (b)(3)(ii) of the Rights in Technical Data and Computer Software clause at 252.227-7013.

Contractor/ Manufacturer is:

DPM Computer Solutions  
8430-D Summerdale Road  
San Diego, CA 92126-5415 USA

All Rights Reserved

The **Same<>Same** configuration file is named 'SAMESAME.CFG'. This file is created on each disk with files downloaded with **Same<>Same**. DO NOT erase this file from the disk! If you do **Same<>Same** will not be able to upload any files from it. It will not recognize it as a **Same<>Same** disk. Also do not erase any files from the disk or **bad things** will happen!



[Downloading/Uploading Speed](#)

[Configure](#)

[Purge File Spec List](#)

[Uploading](#)

Downloading

Configure

Set Time/Date

Download/Upload Speed

# Same<>Same Registration Form

Select the "Print Topic" button from the menu bar to print this form.

## Registration Cost

**Individual copies:** Registration is only \$5 (one time fee). This intitles you to use Same<>Same on two computers.

**Business copies:** Registration is only \$10 and \$1 for each computer.

NAME \_\_\_\_\_

COMPANY \_\_\_\_\_

STREET \_\_\_\_\_

STREET \_\_\_\_\_

CITY \_\_\_\_\_

STATE \_\_\_\_\_ ZIP \_\_\_\_\_ - \_\_\_\_\_

COUNTRY \_\_\_\_\_

E-Mail Address (InterNet/CIS/AOL):

\_\_\_\_\_

Disk Size preferred    3.5" [ ] 5.25" [ ]

Same<>Same Individual License - \$5.00 \* Qty: \_\_\_\_\_ =                    \$ \_\_\_\_\_

Same<>Same Business License - \$10.00 + \$1 \* Users \_\_\_\_\_ =                    \$ \_\_\_\_\_

Same<>Same Diskette Labels: 1 sheet - \$5.00 Example                    \$ \_\_\_\_\_

Shipping/Handling - US or Canada - \$3.00                    \$ \_\_\_\_\_

Shipping/Handling - Outside of US or Canada - \$10.00                    \$ \_\_\_\_\_

Shipping Thru InterNet E-mail  
UUEncode [ ] BinHex [ ] Mime [ ] \$1.00                    \$ \_\_\_\_\_

=====

Total in US Funds drawn on a US Bank                    \$ \_\_\_\_\_

Make checks payable to: David McCarter

## Mail to:

DPM Computer Solutions  
8430-D Summerdale Road  
San Diego, CA 92126-5415  
USA







